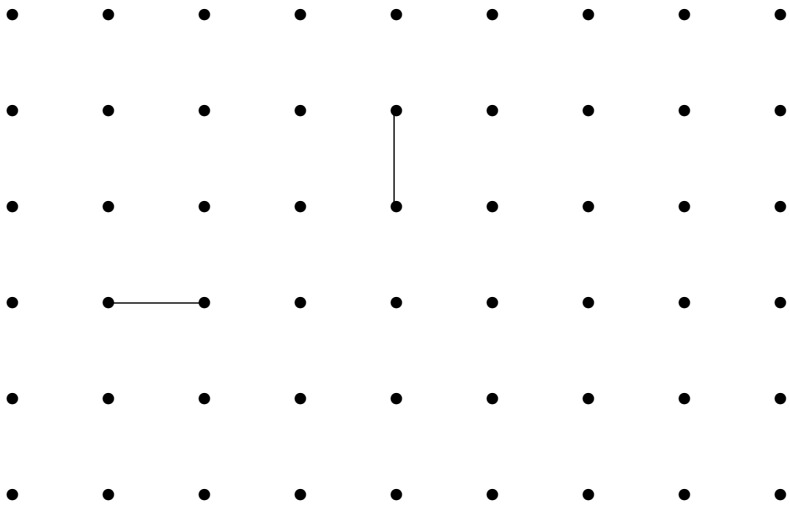


Send

Forty days

This game will help you remember how many days are in the season of Lent.



You and one other person take turns connecting two dots that are next to each other. Two lines are drawn for you. If your line completes a square put your initial inside the square. How many boxes did you make?



Lead us from tempting times, Lord. Amen

This week

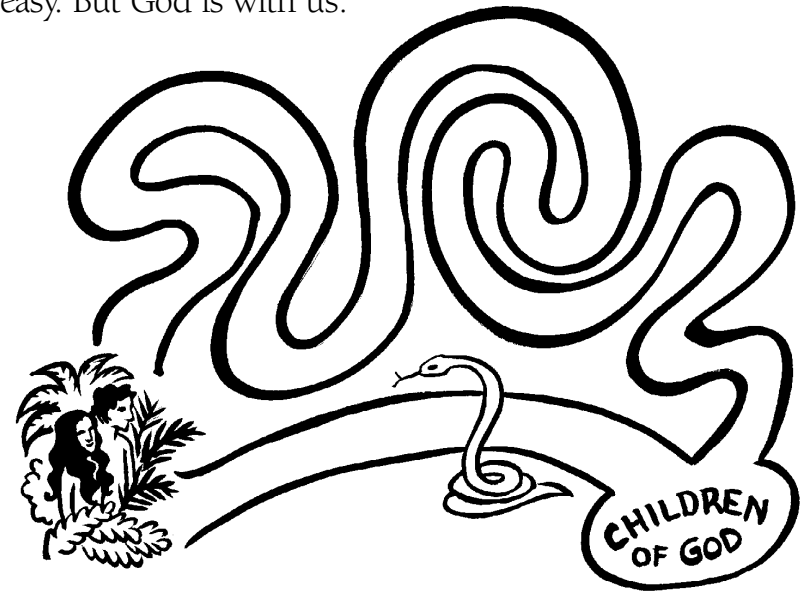
Learn the actions or a tune for the Lord's Prayer. Pray it each night before bed.



gather

Welcome to worship. This is the first Sunday in Lent—a journey to learn more about God. Sometimes people do something extra in Lent. Other people give up something they enjoy.

Walk the Lenten path, children of God! It's not always easy. But God is with us.



Genesis 2:15-17; 3:1-7

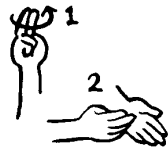
Adam and Eve were tempted away from God.

Find the right path from Adam and Eve to the children of God. Be careful. The way that seems easiest is sometimes the wrong path to follow!

The Lord's prayer

Matthew 4:1-11

Our **Father** in heaven, **hallowed** be your name.



Your kingdom come.
Your will be done on **earth**



as in **heaven**.



Give us today
our daily bread.



Forgive us our sins,
as we **forgive** those
who sin against us.



Save us from the time
of **trial**.



And deliver us from **evil**.



For the **kingdom**,



the **power**,



and the **glory** are yours,
now and forever.



Amen



Jesus was tempted by the devil. The devil said:

Change these
stones to bread.

Jump
from a high place
to test God.

Worship me,
not God.

Which part of the Lord's Prayer are good answers for the devil's tempting words?

Draw a line to the prayer petition that would answer the devil's words.

Use your hands to learn the Lord's Prayer. Follow along when you hear the words and pray with your hands in worship.



Have you had times when the easy or quick way wasn't God's way?

Where Did It Go?

There's something you won't hear this Sunday during worship: the word *Alleluia*! Lent is a serious, sometimes sad, time. You will hear *Alleluia* again on Easter Sunday.

Alleluia is a word used for praise and celebration. In the word search below, find some other words that celebrate God. Words are forward, backward, up, down, and diagonal. Hint: Every word ends in the letter E.

AWE LOVE ADORE SERVE
 PRAISE BELIEVE REJOICE CELEBRATE

A	R	B	W	I	L	J	O	E	V	D	O	M
S	O	Q	E	F	C	N	H	S	I	W	C	F
T	H	A	A	L	R	I	E	S	B	X	E	A
C	N	S	G	O	I	V	K	E	N	E	D	Y
H	I	J	O	P	U	E	R	R	A	O	D	E
W	T	Y	T	E	P	H	V	V	R	L	O	I
C	E	L	E	B	R	A	T	E	V	O	L	M
U	A	R	S	T	U	B	S	C	W	Z	E	B
T	R	E	H	O	L	I	E	I	S	A	Q	U
I	J	R	O	P	A	U	T	O	S	D	B	I
L	B	C	D	R	N	O	A	J	E	C	E	B
O	W	E	P	E	H	Y	R	E	G	I	O	L
N	M	A	Y	S	D	U	V	R	E	E	P	I



READER

Lent 1

- Today is the **first Sunday** in **Lent**.
- There are **six Sundays** in Lent before we celebrate **Easter**.
- The symbol we see for Lent is a **road** leading to a **cross**.
- The road reminds us of **Jesus' journey** to the cross.

Journey of Faith

Think of a journey you have taken. How many steps did it take to get there? Jesus took many journeys. He traveled many places to teach people about God. Unscramble these words to find out his important message.



_____.

During Lent, we do not say or sing the word ALLELUIA during worship. That's because Lent is a quiet, thinking time. We use Lent to get ready for Easter. On Easter, everyone celebrates that Jesus is alive. Then we say and sing ALLELUIA again.

Decorate this ALLELUIA. Then hide this paper someplace where you'll remember it on Easter.



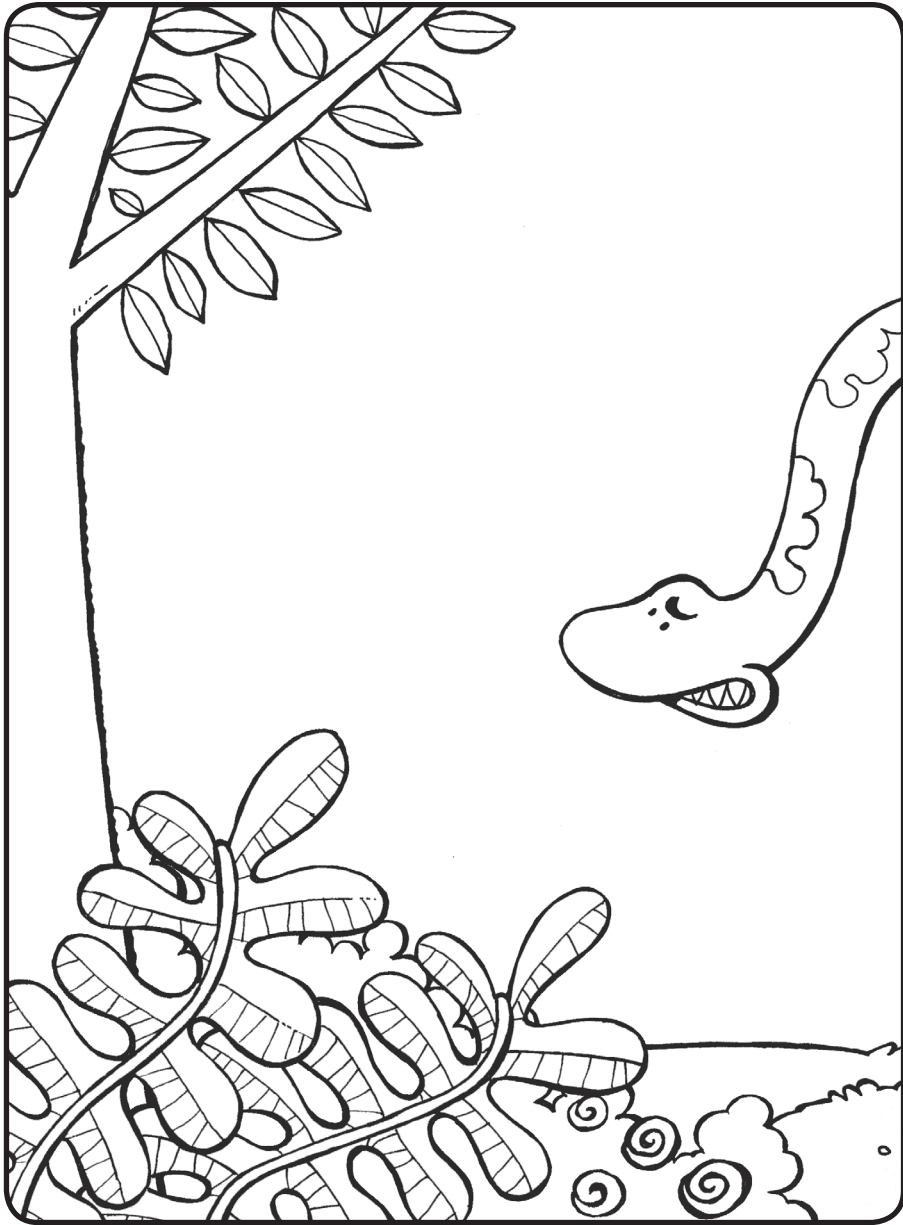
PRE-READER

Lent 1

- Today is the **1st Sunday** in **Lent**.
- During Lent we **learn** about the **life of Jesus**.
- The symbol we see for Lent is a **road** to a **cross**.
- A **road** reminds us of a **journey**.

Color the road to the cross.





As soon as they ate the fruit,
EVERYTHING CHANGED.

Adam and Eve did not listen to God.
People today don't always listen to God either.
Jesus came to help us live how God wants us to live.

Number these pictures to tell the story of Adam and Eve.

