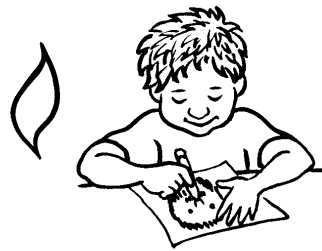


Send

Letting your light shine

Have you heard this song? It goes, "This little light of mine, I'm gonna let it shine." Jeremiah let his light shine by telling everyone he met about God. You can let your light shine, too.

Color in the flame beside each way you can be a messenger of God's love.



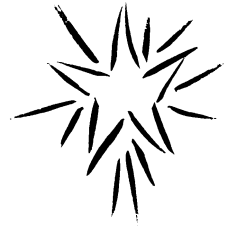
Dear God, please let my light shine when I share your love with others. Amen

This week

Invite a friend to come to church with you.

Kids Celebrate

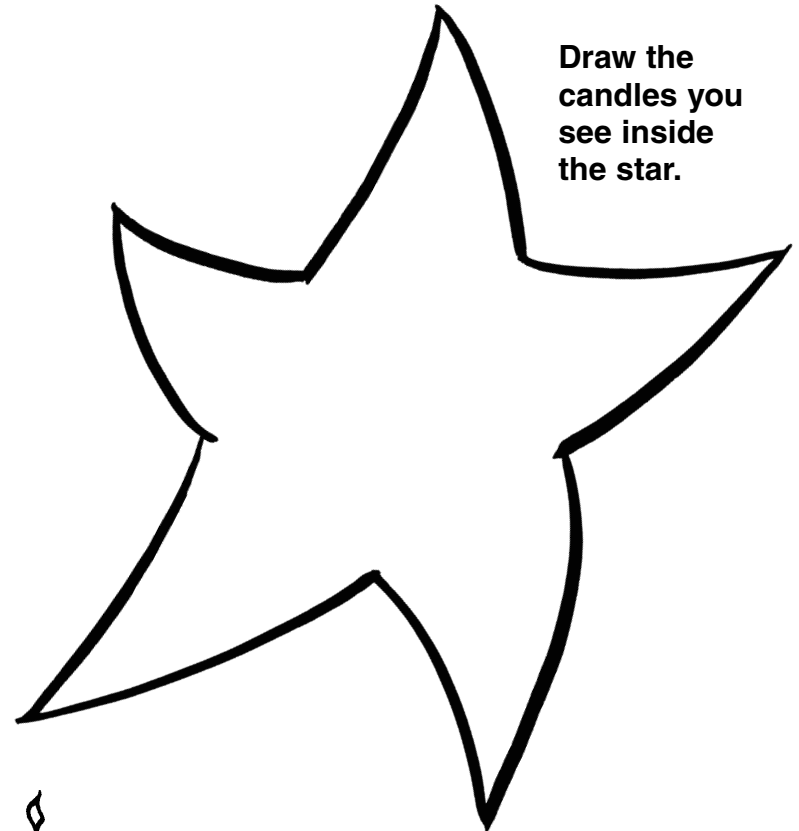
Fourth Sunday after Epiphany



gather

Welcome to worship. During the church season of Epiphany, we hear Bible stories about Jesus, who filled the world with the light of God's love. Candles in our worship space remind us of that happy light. Do you see candles burning? Where are they?

Draw the candles you see inside the star.



What did you learn today in worship?

Jeremiah, one of God's messengers

Jeremiah 1:4-10

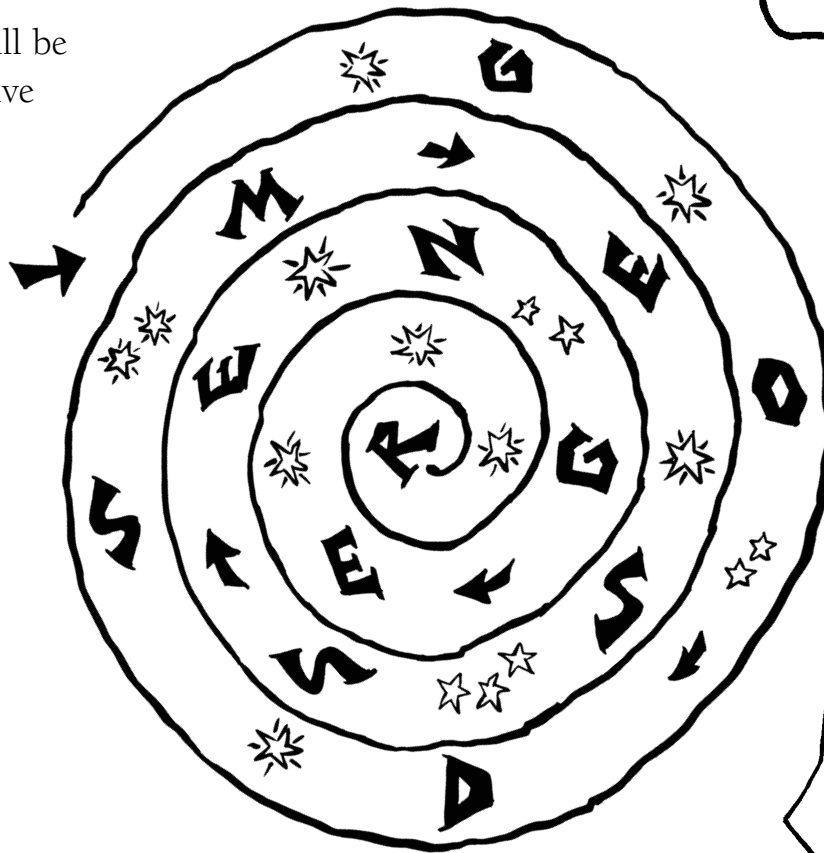
Jeremiah loved God, and God loved Jeremiah.

God said, "Jeremiah, I choose you to be my messenger to all the nations."

Jeremiah said, "Lord, I don't know what to say. I am only a boy."

God said, "Do not be afraid. I will be with you to protect you. I will give you the words to say."

Follow the arrows around and around until you reach the center of the circle. As you come to each letter, write it in order in a blank space below.



Welcoming others

God wants us to welcome everyone to worship. Here are some ways people welcome others to worship.



The pastor welcomes people visiting your church. Write **Welcome!** inside the cartoon balloon.

Ushers greet people, give them bulletins, and help them to find a place to sit. Draw bulletins in the usher's hand.



When people share the peace, they welcome each other with hugs, handshakes, and cheerful words. Add smiles to the people's faces.

Jeremiah was _____
_____.



How can you welcome someone at worship today?

Translation Decoder

There are many different translations of the Bible. Use the key to fill in the names of some popular translations.

A: ∞	I: =
D: Δ	O: *
E: +	R: ◇
G: #	T: >

NRSV: N+W ◇+V=S+Δ S>∞NΔ∞RΔ V+◇S=*N

ESV: +N#L=SH S>∞NΔ∞RΔ V+◇S=*N

NIV: N+W =N>+◇N∞>=*N∞L V+◇S=*N

KJV: K=N# J∞M+S V+◇S=*N

Which translation of the Bible does your church use? Find out and write the name here:



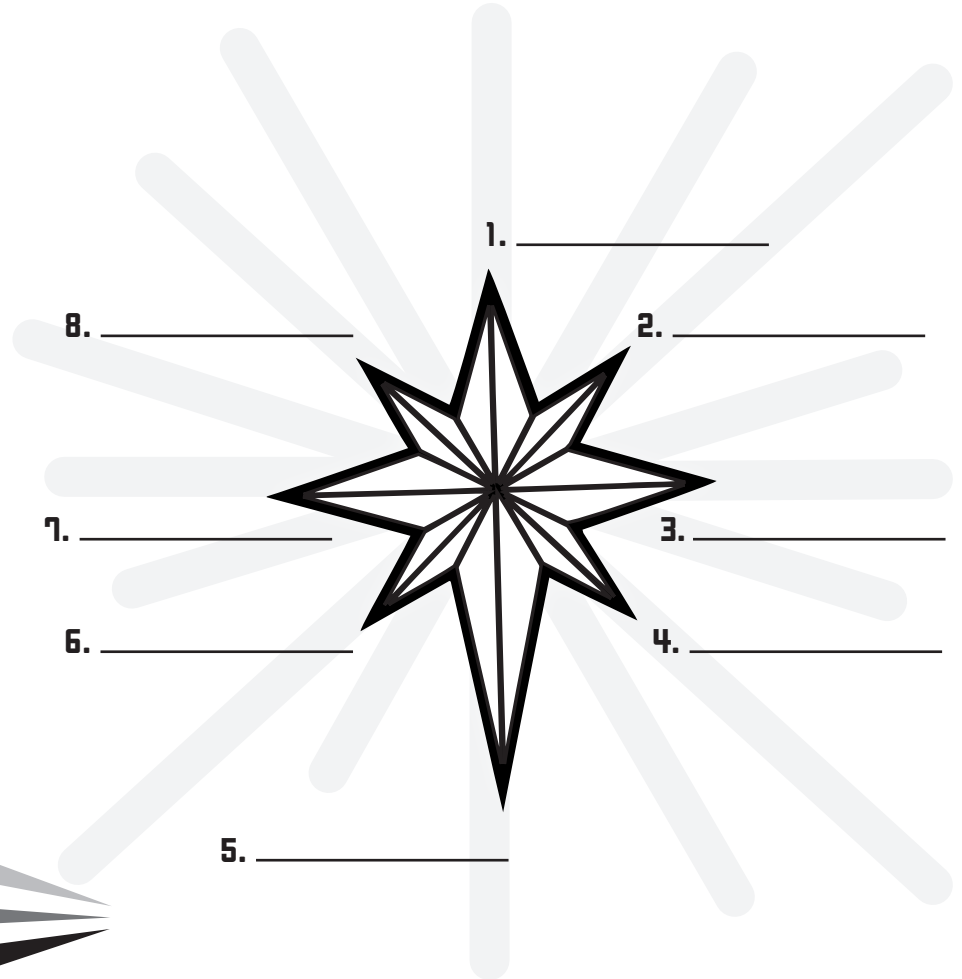
READER

Epiphany 4

- Today is the **4th Sunday** in the season of Epiphany.
- Epiphany is a season of **light in darkness**.
- During Epiphany, we think about **why Jesus came to the world**.

Light of Life

The symbol of Epiphany is a burst of light. Write something that brings goodness and light to your life at each of the points.



"Before I formed you in the womb I knew you, and before you were born I consecrated you." Jeremiah 1:5a

Memory Verse



You might not be familiar with the word *consecrate* from today's memory verse, but it's very important to the verse's meaning! Look at the chart below. Each word has a number for its column (written at the top) and for its row (written to the left). If the word's column number and row number add up to 6, then that word is a synonym for consecrate. Shade in the right words.

	1	3	4	2	5
5	Dedicate	Ignore	Change	Forget	Name
4	Push	Condemn	Poke	Bless	Hold
1	Await	Hide	Assemble	Take apart	Set apart
2	Imagine	Write	Make holy	Smell	Raise
3	Make secret	Anoint	Hope for	Remember	Juggle



Look It Up!

The books in the Bible with the most chapters are Psalms, Isaiah, and Jeremiah. Look up how many chapters each one has.

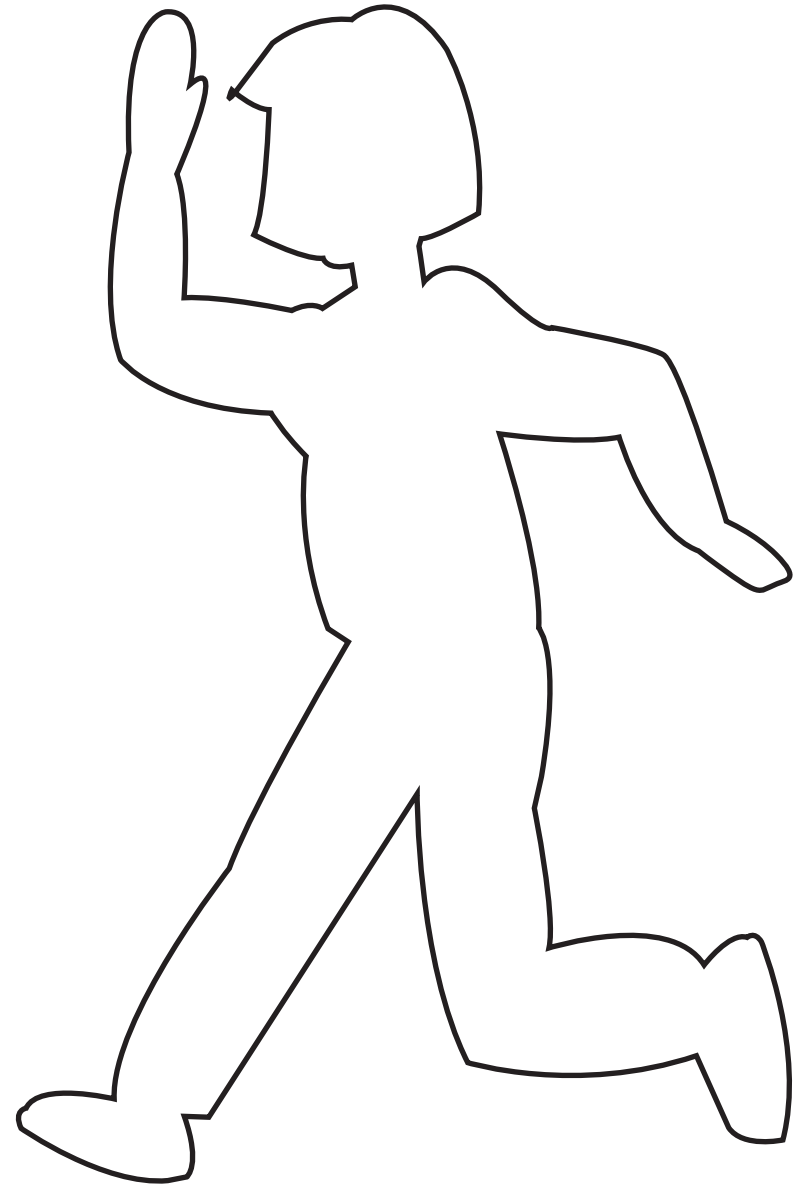
NUMBER OF CHAPTERS IN PSALMS: _____

NUMBER OF CHAPTERS IN ISAIAH: _____

NUMBER OF CHAPTERS IN JEREMIAH: _____

Divine Design

Fill in the outline of the person with descriptions or pictures of things that make YOU who you are.



Many ancient churches were decorated in a similar way. There were drawings of plants and animals by the floor. The sky and angels were in the middle. Jesus was at the very top.

Finish drawing the Earth and the heavens on this wall.

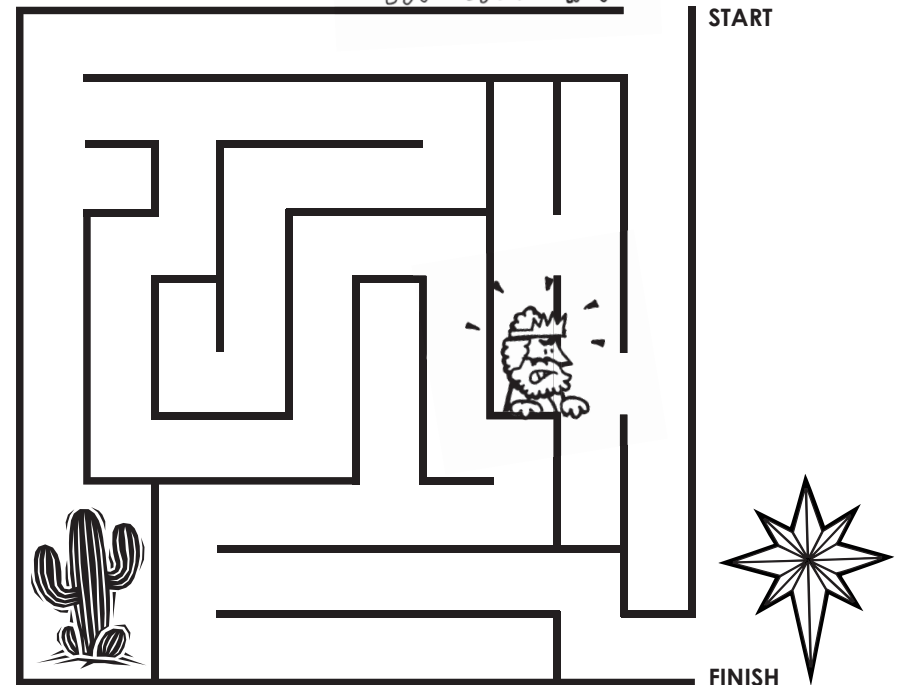


PRE-READER

Epiphany 4

- Today is the **4th Sunday** after Epiphany.
- During Epiphany, we remember that Jesus is the **light of the world**.
- The symbol of Epiphany is a **burst of light**.

The symbol of Epiphany is a star. It reminds us of the star that the Magi followed to find Jesus. Go through the maze to help them reach the star, but don't run into Herod or get lost in the desert!



START

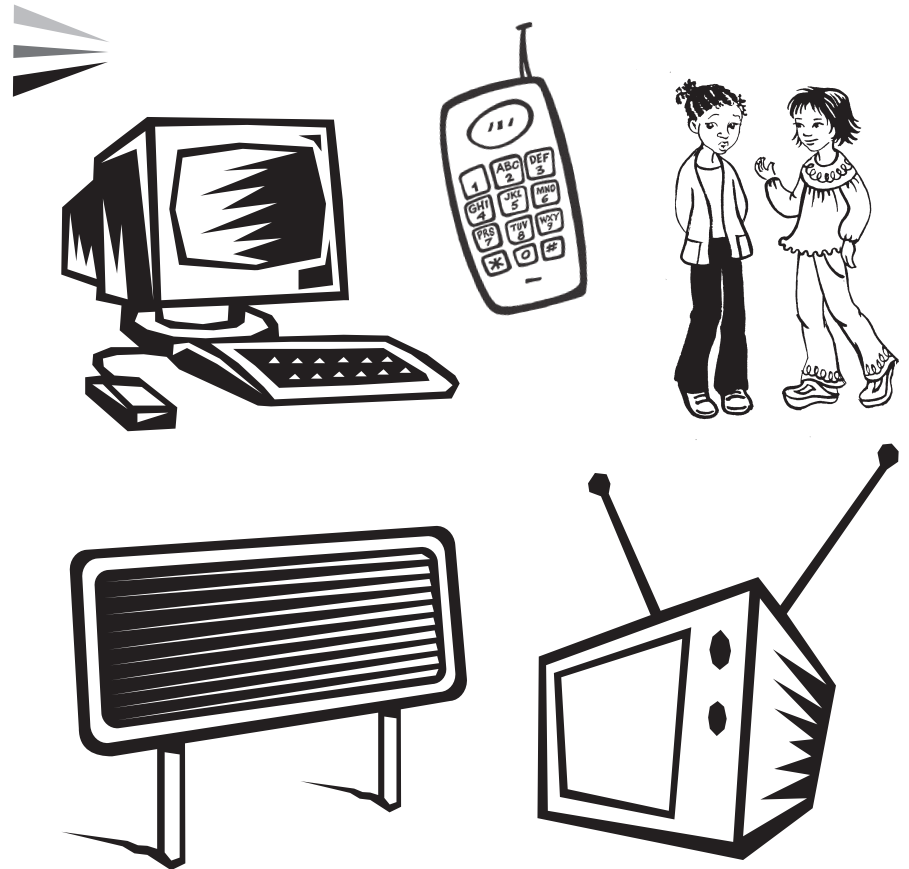
FINISH



Jeremiah was nervous. "But, God, I'm just a kid! I don't know what to say to grown-ups!"

God tells Jeremiah to "speak" God's word to the nations. How would you spread God's word today?

Circle the way that you would choose, or draw your own idea.



MY IDEA